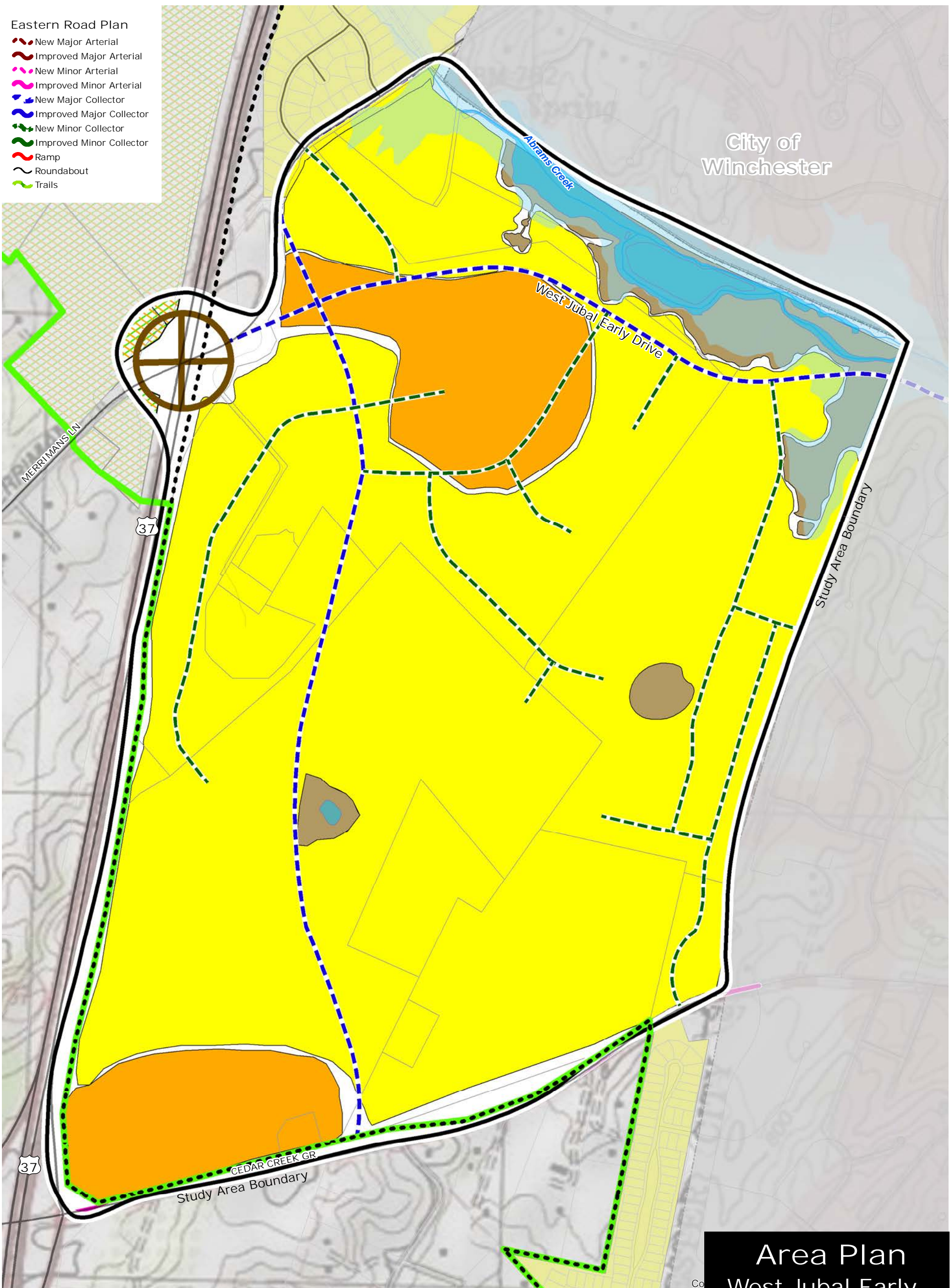


- Eastern Road Plan**
- New Major Arterial
 - Improved Major Arterial
 - New Minor Arterial
 - Improved Minor Arterial
 - New Major Collector
 - Improved Major Collector
 - New Minor Collector
 - Improved Minor Collector
 - Ramp
 - Roundabout
 - Trails



City of
Winchester

2035 Comprehensive Policy Plan Map
Adopted January 25, 2017

Area Plan West Jubal Early Land Use Plan

Urban Development Area

Sewer and Water Service Area

Land Use Legend

- Business
- Mixed-Use
- Mixed Use Commercial \ Office
- Highway Commercial
- Industrial
- Warehouse

- Heavy Industrial
- Mixed Use Industrial \ Office
- Extractive Mining
- Residential
- Planned Unit Development
- Mixed Use Age Restricted

- Urban Center
- Neighborhood Village
- Commercial Recreation
- Recreation
- Natural Resources & Recreation
- Park

- Sensitive Natural Areas
- Fire & Rescue
- Institutional
- School
- Rural Community Center
- Proposed Interchange

