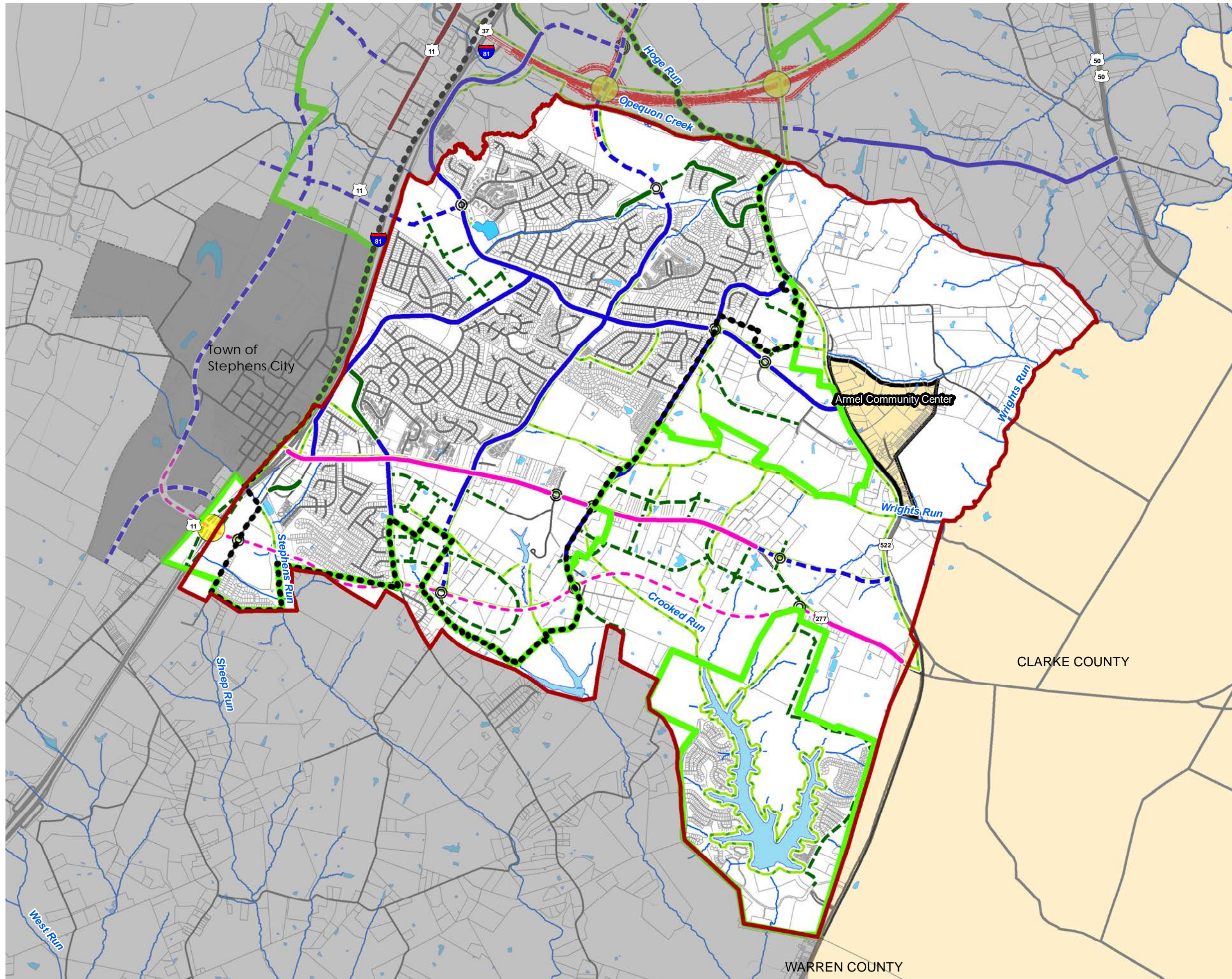
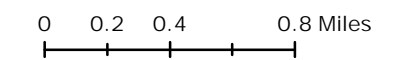


Area Plan

Southern Frederick Land Use Plan Transportation w/Trails Map



- Urban Development Area
- Sewer and Water Service Area
- Proposed Interchanges
- Eastern Road Plan**
 - New Major Arterial
 - Improved Major Arterial
 - New Minor Arterial
 - Improved Minor Arterial
 - New Major Collector
 - Improved Major Collector
 - New Minor Collector
 - Improved Minor Collector
 - Ramp
 - Roundabout
 - Trails



2035 Comprehensive Policy Plan Map
Adopted January 25, 2017
Amended December 13, 2017



WARREN COUNTY

CLARKE COUNTY

Town of
Stephens City

Armel Community Center

Sheep Run

Stephens Run

Crooked Run

Wrights Run

Wrights Run

Hoge Run
Opequon Creek

West Run