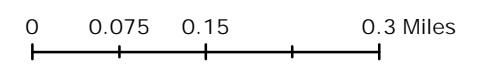


Area Plan Route 37 West Land Use Plan

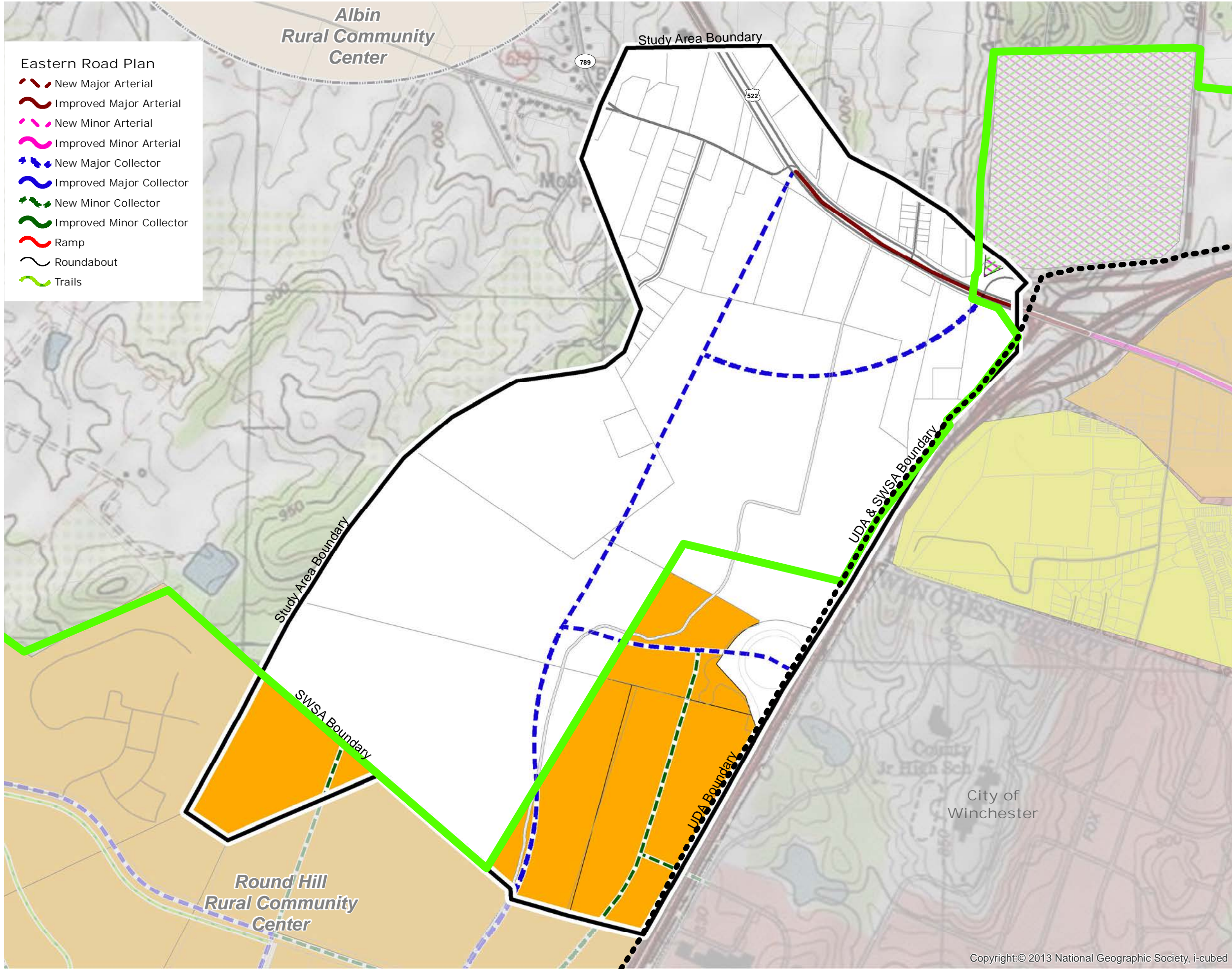
- Eastern Road Plan**
- New Major Arterial
 - Improved Major Arterial
 - New Minor Arterial
 - Improved Minor Arterial
 - New Major Collector
 - Improved Major Collector
 - New Minor Collector
 - Improved Minor Collector
 - Ramp
 - Roundabout
 - Trails

- Urban Development Area
- Sewer and Water Service Area

- Land Use Legend**
- Business
 - Mixed-Use
 - Mixed Use Commercial \ Office
 - Highway Commercial
 - Industrial
 - Warehouse
 - Heavy Industrial
 - Mixed Use Industrial \ Office
 - Extractive Mining
 - Residential
 - Planned Unit Development
 - Mixed Use Age Restricted
 - Urban Center
 - Neighborhood Village
 - Commercial Recreation
 - Recreation
 - Natural Resources & Recreation
 - Park
 - Sensitive Natural Areas
 - Fire & Rescue
 - Institutional
 - School
 - Rural Community Center



2035 Comprehensive Policy Plan Map
Adopted January 25, 2017



Copyright:© 2013 National Geographic Society, i-cubed