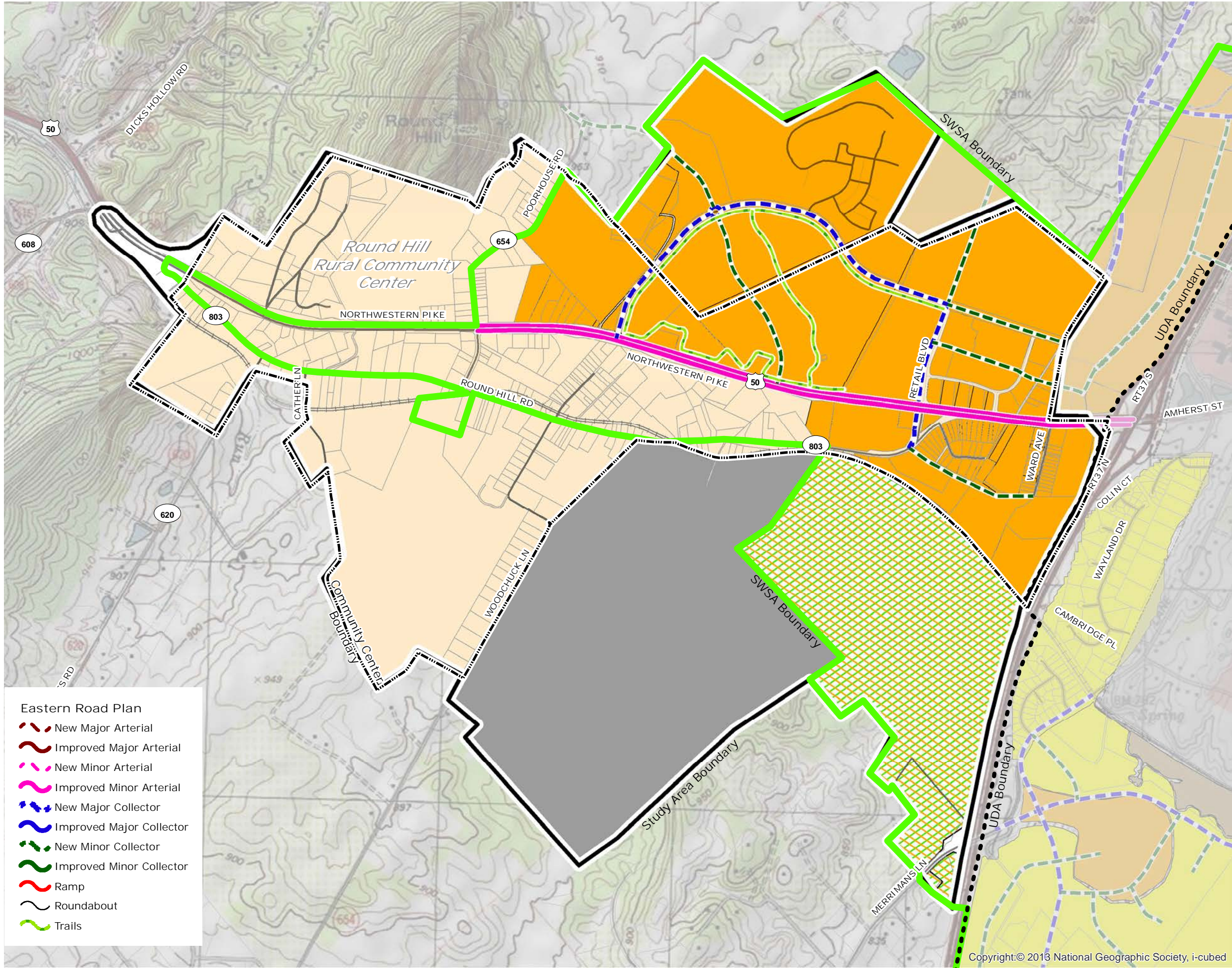


Area Plan

Round Hill Community Land Use Plan

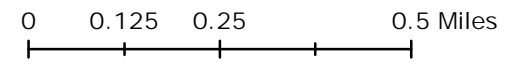


- Urban Development Area
- Sewer and Water Service Area

Land Use Legend

- Business
- Mixed-Use
- Mixed Use Commercial \ Office
- Highway Commercial
- Industrial
- Warehouse
- Heavy Industrial
- Mixed Use Industrial \ Office
- Extractive Mining
- Residential
- Planned Unit Development
- Mixed Use Age Restricted
- Urban Center
- Neighborhood Village
- Commercial Recreation
- Recreation
- Natural Resources & Recreation
- Park
- Sensitive Natural Areas
- Fire & Rescue
- Institutional
- School
- Rural Community Center

- ### Eastern Road Plan
- New Major Arterial
 - Improved Major Arterial
 - New Minor Arterial
 - Improved Minor Arterial
 - New Major Collector
 - Improved Major Collector
 - New Minor Collector
 - Improved Minor Collector
 - Ramp
 - Roundabout
 - Trails



2035 Comprehensive Policy Plan Map
Adopted January 25, 2017



Copyright:© 2013 National Geographic Society, i-cubed