



MEMORANDUM

---

---

**TO:** Frederick County Transportation Committee

**FROM:** John A. Bishop, AICP, Assistant Director - Transportation *JAB*

**RE:** August 26, 2019 Transportation Committee Meeting

**DATE:** August 20, 2019

---

---

The Frederick County Transportation Committee will be meeting at **8:30 a.m. on Monday, August 26, 2019** in the first-floor conference room of the Frederick County Administration Building, 107 North Kent Street, Winchester, Virginia.

AGENDA

1. **Brucetown Road – Truck Restriction Request**
2. **Armel Road – Speed Limit Reduction Request**
3. **Transportation Forum**
4. **Planning Updates**
5. **County Project Updates**
6. **Upcoming Agenda Items**
7. **Other**
  - a. **Route 11 Speed Limit Reduction Request**

Please contact our Department if you are unable to attend this meeting.

Attachments

JAB/dw

## **Item 1: Brucetown Road (Rt. 672) – Truck Restriction Request**

---

---

### **Topic Synopsis**

At the July 29 meeting of the Transportation Committee a citizen was in attendance to request a number of items related to Brucetown Road. Among those items was the potential relocation of the Carmeuse entrance to Route 11 and a weight restriction sign on the bridge over the Opequon Creek. Those items will require a submission by Carmeuse and additional investigation for need by VDOT respectively. The third item the citizen requested was a restriction of through truck traffic on Brucetown Road.

### **Analysis**

The most recent recorded traffic count by VDOT on the Brucetown Road segments are as follows:

Route 11 to Quarry Lane: 2,700 AADT with 12% (324) 3 axle trucks and 6% (162) trucks with trailers

Quarry Lane to Sir Johns Road: 1,900 AADT with 2% (38) 3 axle trucks and 0% trucks with trailers

Sir Johns Road to Rocky Ford Road: 1,400 AADT with 2% (28) 3 axle trucks and 0% trucks with trailers

Rocky Ford Road to Shady Creek Road: 870 AADT with 3% (26) 3 axle trucks and 1% (9) trucks with trailers

Based upon the count data the most significant truck activity is from Quarry Lane to Route 11, however, a truck restriction would only apply to through trucks, so a truck restriction to Brucetown Road from Route 11 to the Clarke County Line would not apply to the significant majority of these vehicles.

Finally, Truck restriction requests require a proposed alternative Route. Staff would be concerned that while the proposed alternative route would likely be Route 340 to Route 7, this would not stop trucks from simply shifting to other secondary routes in Frederick County such as Old Charles Town Road.

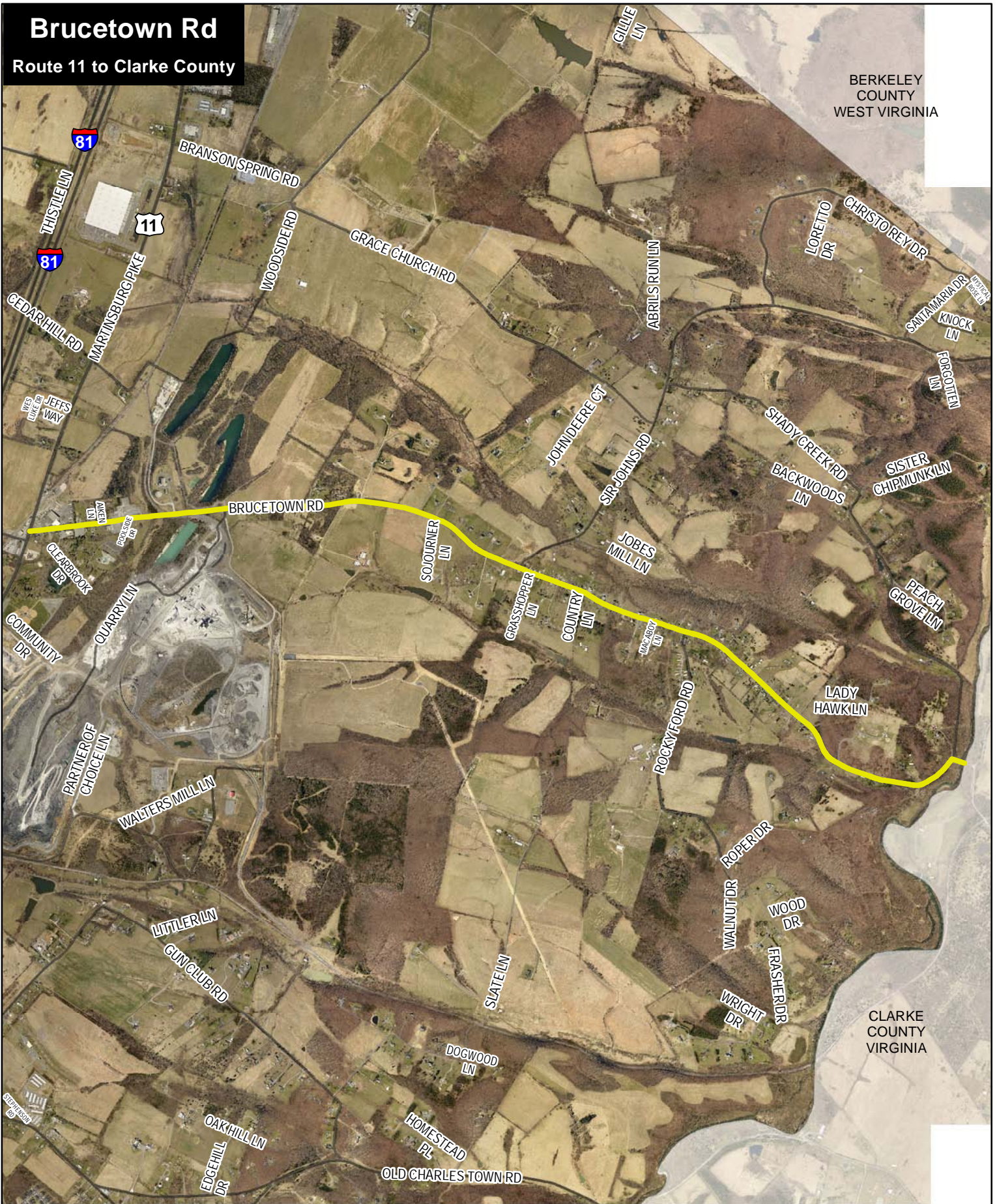
### **Recommended Action**

If the Committee would wish to seek a truck restriction on Brucetown Road, the action would be to direct Staff to prepare an application packet for Board of Supervisors review and to pass a recommendation to the Board of Supervisors.

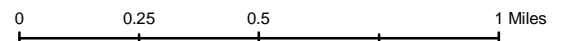
# Brucetown Rd

Route 11 to Clarke County

BERKELEY COUNTY  
WEST VIRGINIA



CLARKE COUNTY  
VIRGINIA



## **Item 2: Armel Road (Route 642) – Speed Limit Reduction Request**

---

---

### **Topic Synopsis**

Staff is in receipt of a citizen request to reduce the speed limit on Armel Road from the Clarke County line to Route 522.

### **Analysis**

Prior to 2016, Armel Road was an unmarked 55 mph by State code. At the request of citizens, a speed study (attached) was conducted that evaluated the roadway and determined a speed limit of 55 mph with warning signs in some locations where curvature was present. That study was approved by the State Highway Engineer as well as the Frederick County Sheriff's office and the State Police.

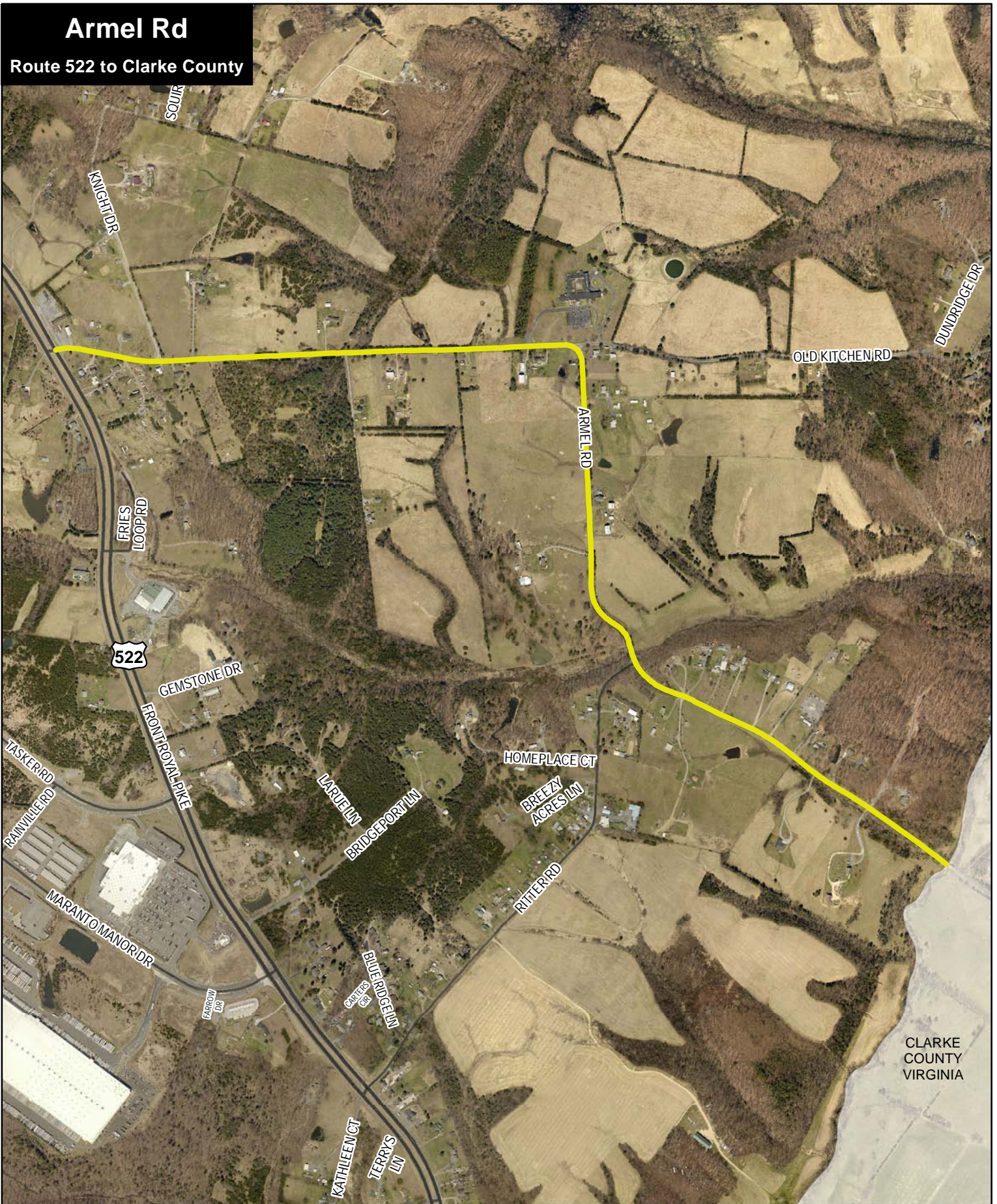
The speed limit continues to be a concern to the citizens in the area and they have also particularly noted a desire that the intersection of Armel Road and Kitchen Road be changed to a 3-way stop condition. In terms of the speed limit, Staff has reached out to VDOT to check the accident rate (response attached) and the Frederick County Sheriff's office who has affirmed that they do not have an issue with the speed limit. VDOT would need to have Traffic Engineering conduct and evaluation on the potential 3-way stop.

### **Recommended Action**

If the committee would wish to request that VDOT reconsider their determination of the speed limit, a recommendation to the Board of Supervisors would be appropriate.

# Armel Rd

Route 522 to Clarke County



CLARKE COUNTY VIRGINIA









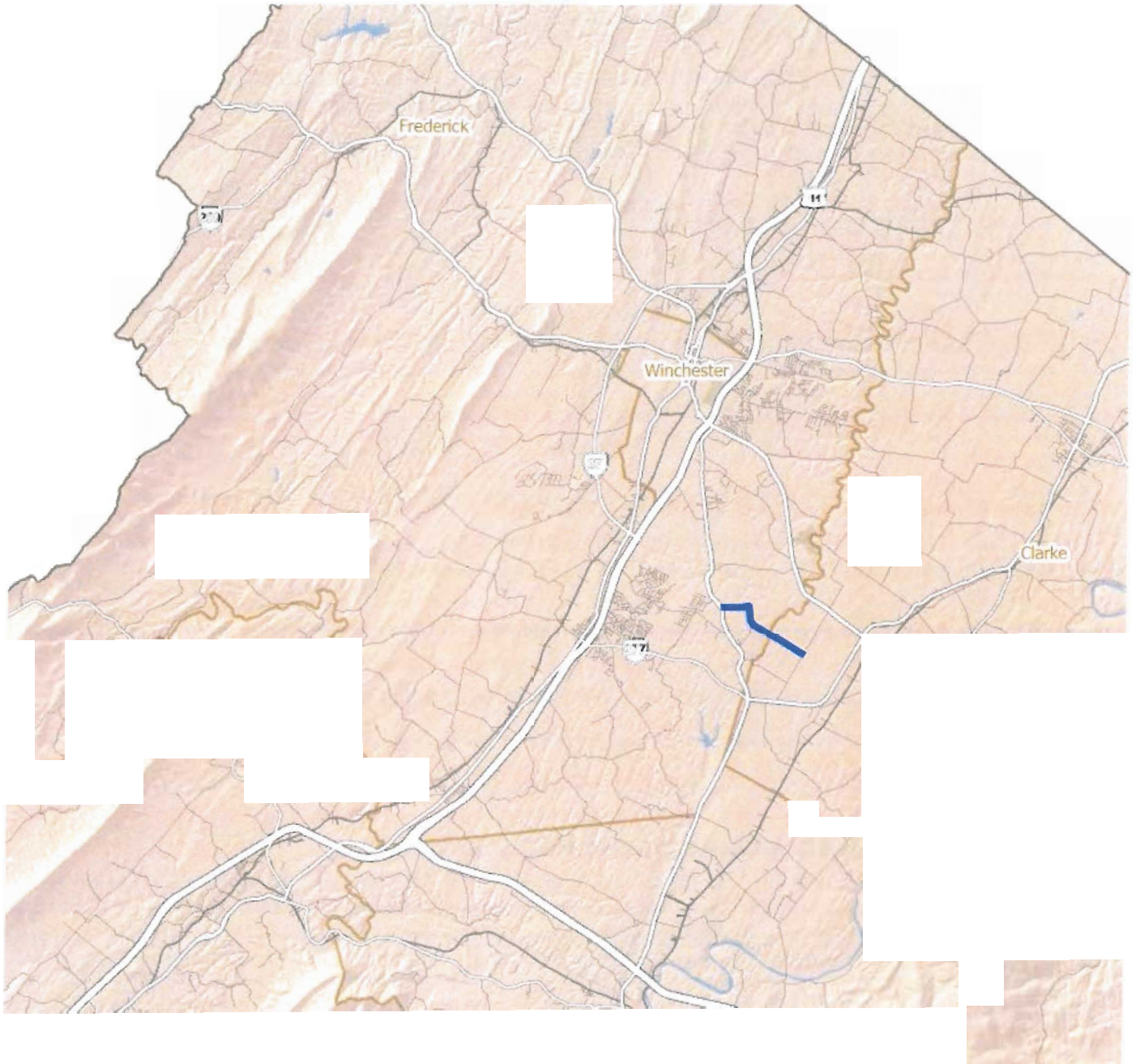












## **Item 3: Transportation Forum**

---

---

### **Topic Synopsis**

Brief update on the Transportation Forum development progress and finalization of the date.

## Item 4: Planning Updates

---

---

### **Topic Synopsis**

Staff will update the Committee on the activities they have participated in for the State Long Range Transportation Plan update (VTRANS), and the MPO Long Range Plan update.

### **Analysis**

NA

### **Recommended Action**

NA

## **Item 5: County Project Updates**

---

---

### **Crossover Boulevard aka Tevis Street Extension/Airport Road/I-81 Bridge:**

Notice to proceed was issued to Perry Engineering on May 14. Construction is ongoing on the site and Staff is establishing a website for citizens to review details of the project and photos of the progress.

### **Renaissance Drive:**

Staff has received 30% design comments and is finalizing the MOU with CSX for the at grade rail crossing.

### **Northern Y:**

A meeting is taking place on 8/22 with the County's private partner and Staff will update at the meeting.

### **Jubal Early Drive Extension and Interchange with Route 37:**

These funds have been marked for deallocation.



## Item 6: Upcoming Agenda Items

---

---

### August

SmartScale (ongoing discussion and development)

Transportation Forum

### TBD

Oakdale Crossing Traffic Calming Study

## **Item 7: Other**

---

---

Route 11 speed limit reduction request.

**Ralph S. Gregory**  
**164 Meadow Trace Lane**  
**Middletown, VA 22645**  
**(540) 664-5413**

August 15, 2019

To Whom it May Concern:

I am writing today to request the lowering of the speed limit on U. S. Route 11 just north of Stephens City.

I am basing this request on my understanding that a housing development of 55 residences is in the planning stages just south of Shenandoah Valley Christian Academy, east of Route 11. I also am of the belief that there are discussions in the works for developing the land west of Route 11 across from the school. Since both of these sites are within the Stephens City corporate limits, it will constitute a need to reduce the existing speed limit of 45 mph to 25 or 35 mph.

If you take a good look at the speed limits for Route 11 just north of Stephens City you will find that:

Inside Stephens City town limits it is 25 mph  
It then increases to 40 mph for 3/10 of a mile  
Then increases to 55 mph for 8/10 of a mile  
At which time it backs down to 45 mph

What I am suggesting is a consistent speed limit, possibly increasing to 35 or 40 mph between Winchester and Stephens City. With the addition of all of these houses, more growth will no doubt come along the Route 11 corridor requiring the reduced speed limit.

If feel there is merit to this request, I will be happy to discuss it further.

Respectfully,

Ralph S. Gregory